

Biominerological Studies of Oral Squamous Cell Carcinoma

Maciej Pawlikowski

AGH University of Science and Technology, Department of Mineralogy, Petrography and Geochemistry, Poland.
mpawlik@agh.edu.pl

Corresponding Author: Maciej Pawlikowski, AGH University of Science and Technology, Department of Mineralogy, Petrography and Geochemistry, Poland.

Abstract

Biominerological studies - microscopic histology examination and EDS - of the tissues of oral squamous cell carcinomas were conducted. Elevated levels of Ca, P, Ni, K, S, N and others were found in the tissues. Those elements may have played a part in defecting DNA structure responsible for cell proliferation and development of cancerous tissue. It is also possible that elevated levels of those elements are the result of cancerous activities instead. Finding the answer requires further studies.

INTRODUCTION

The etiology and pathogenesis of neoplastic diseases is still not fully understood, even though this problem is studied by researchers all around the world. The extensive literature concerning those issues often goes beyond the scope of oncology. Recent years have brought dynamic growth in research both particular (1, 2, 7, 8, 12, 13, 22, 24, 25, 29, 30, 31, 33, 34, 38, 40, 42, 45, 46, 49, 50, 53, 55, 56, 63, 67, 68), general (8, 14, 23, 37, 39, 41, 43, 44, 59, 64, 66), and statistical (9, 11, 15, 17, 32, 35, 47, 52, 60, 81, 65, 68, 69, 70, 71). There are fewer publications on cancer research techniques, especially in mouth, neck, head and tongue cancers (25, 25, 28, 48, 51, 54, 57, 58), publications on treatment and different types of cancer therapies (4, 5, 10, 16, 18, 19, 35, 28), and genetic research (20, 21, 62). The least numerous are publications regarding experimental creation of cancer phenomena (6).

Recently publications related to the use of mineralogical methods in tissue studies, including cancer, appear more frequently (37-46). They bring new information on tissue mineralization and the relation between mineralization and other phenomena, including carcinogenesis.

In laryngology, superficial structure of peripheral blood lymphocytes was examined and their chemical composition was analyzed using mineralogical methods in patients with larynx cancer, showing disorders in their structure and chemical composition.

Premalignant states and laryngeal squamous cell carcinoma were also examined, indicating statistically significant differences in the content of elements in healthy and diseased tissues.

In oncology, by observing several types of connective tissue sarcomas, it was noticed that phosphate crystallization may occur in them especially when there is a rapid change in the pH of the environment in the tumor tissue.

For example, in general surgery, the concentrations of some elements in colorectal cancer were examined - showing significant fluctuations in both their type and amounts in diseased tissues.

However, there are still only a few reports on the use of mineralogical methods in maxillofacial oncology.

TYPES OF ORAL CANCER AND THEIR FREQUENCY

In the mouth itself, more than half of the cancers affect the tongue, and the rest breaks down as follows:

tongue	52%
floor of the mouth	16%
crest of the alveolar ridge	12%
palate	11%
cheek	9%

Oral cancer affects men about 4 times as often as women. The differences are particularly visible in the case of lower lip cancer, where squamous cell

Biomaterial Studies of Oral Squamous Cell Carcinoma

carcinoma is about 30 times more frequent in men than in women. In the case of tongue cancer, it is only twice as frequent in men as in women. It is usually diagnosed at the age of 50 to 70. The majority - almost 80% - of squamous cell carcinomas develop on the face and in the mouth.

PROGNOSIS

The prognosis depends on cancer's location. It's the best in lip and salivary glands cancers, as well as mouth and throat cancers. All the other cancers have bad prognosis.

RESEARCH MATERIAL

The research material consisted mainly of histological preparations from four patients representing different levels of cancer development, as well as comparative material from a healthy patient. Histopathological preparations originated entirely from the archives of the Department of Pathomorphology of the Silesian Medical Academy in Zabrze, and were medically consulted with dr. T. Męcik.

The results of histopathological examination included cancer type - carcinoma planoepitheliale - with determination of its degree of differentiation.

Based on microscopic histological assessment of the extent of the cancer, the material was divided into three groups:

G1 - squamous cell carcinoma, well differentiated

G2 - squamous cell carcinoma, moderately differentiated

G3 - squamous cell carcinoma, poorly differentiated

Blocks used for analysis were prepared with tissue sections fixed in 10% neutralized formalin solution. They were prepared in a typical manner and embedded in paraplast. They were cut using a Reichert microtome (manufactured in Austria) into 6 µm thick sections and placed on slides.

A portion of the sliced preparations were deparaffinized and left on the slides to be tested using a scanning microscope with an EDS chemical analysis attachment.

The control group consisted of fragments of oral mucosa obtained during surgical management of wounds in a patient treated at the Maxillofacial Surgery Clinic in Zabrze due to oroantral fistula after extractions of premolars and molars (Photo S0-1).

During the morphological analysis of oral squamous cell carcinomas (RP), the histoarchitecture of cancer was assessed.

RESULTS

Highly developed squamous cell carcinoma grows and infiltrates the stroma with large, irregular and interconnected sockets (Photo S0-1). On the surface of neoplastic lesions, signs of necrosis were occasionally observed, with the formation of extensive ulcerations. Stroma under normal epithelium around ulcerations may be infiltrated by cancer foci. Spots with preserved cellular system revealed their maturation with the formation of characteristic keratin pearls in the middle (Photo S2-1).

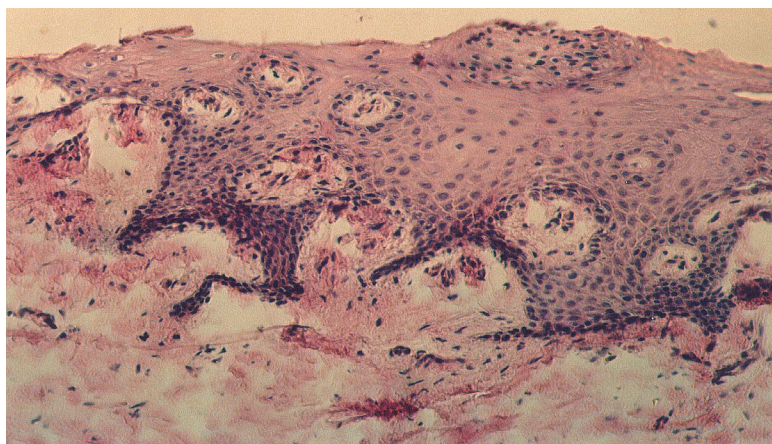


Fig S0-1. Comparative sample. The healthy image of oral mucosa with stratified squamous epithelium. Biological microscope, stain H-E, magnification 120 x.

Sample S1, Squamous cell carcinoma

Woman, age 52

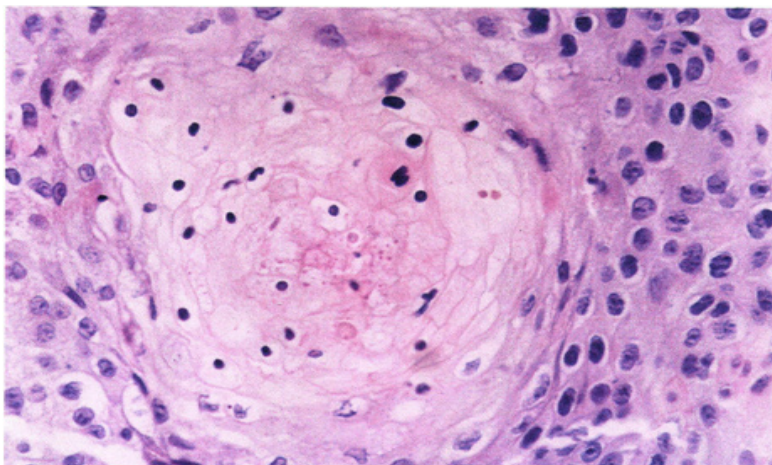


Photo S1-1. Squamous cell carcinoma, G1. Keratin pearl with signs of homogenization. Biological microscope, stain H-E, magnification 420 x.

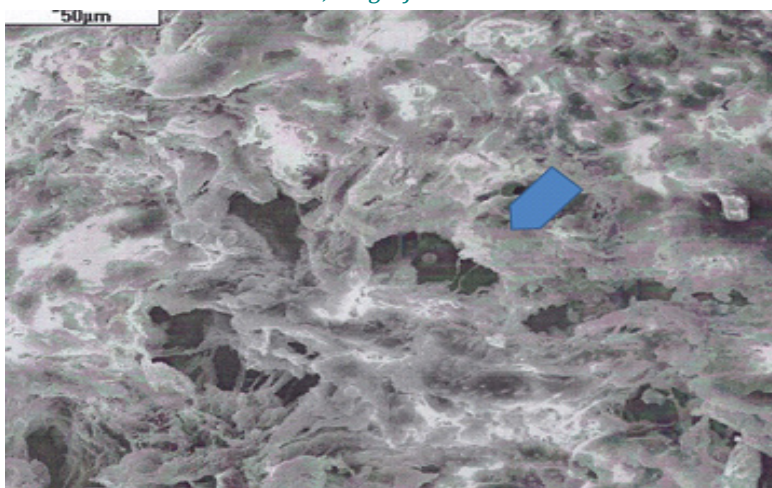


Photo S1-2. Fragment of tissue from the area of the keratin pearl subjected to chemical analysis by the EDS method. Analyzed spot marked with an arrow. SEM.

Chemical analyses conducted at several spots in described tissue revealed (Tab.1) increased levels of not only calcium and phosphorus, but also iron, potassium and silica (Fig. 1). That indicates that the main mineralizing substances in the region of

the keratin pearl are calcium phosphates. The remaining elements probably do not form separate mineral phases and appear in biological structures inserted into the atomic structures of biological components.

Table 1. Results of chemical analysis, sample S 1-1

Element	Content (wt%)
Na	0
Mg	0
Al	0
Si	0,21
Ca	6,93
Fe	0,12
P	3,92
S	0
K	0,10
N	0

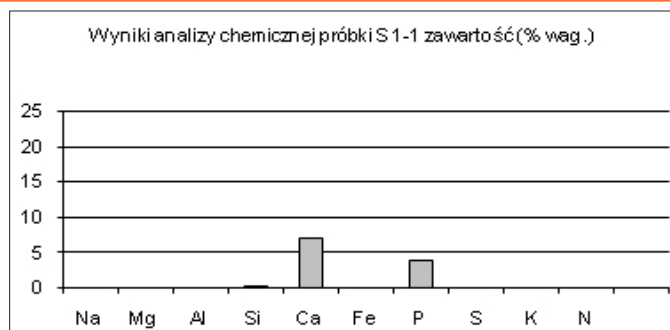


Fig 1. Graph of the content of elements in the examined cancer tissue area

Chemical analyses in other spots (Photo S1-3), slightly more distant from the keratin pearl, also showed elevated levels of certain elements. Calcium

phosphates are dominant here as well, but in addition to iron and silica, slightly elevated contents of nitrogen and sulfur are present (Tab. 2, Fig. 2).

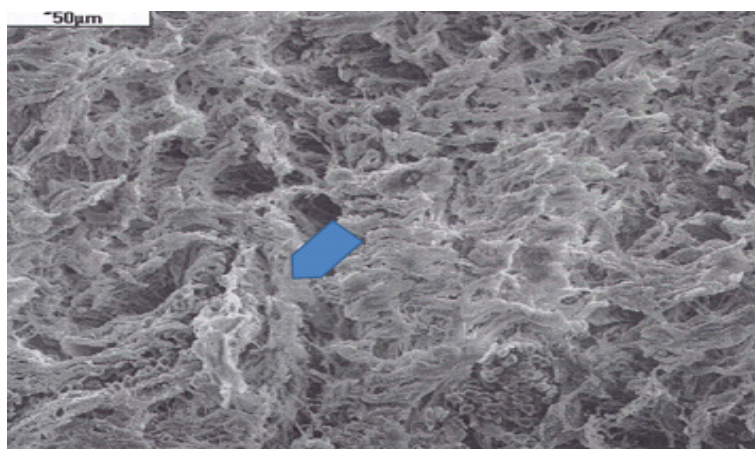


Photo S1-3. Tissue structure in a spot more distant from the keratin pearl. Analyzed spot marked with an arrow. SEM.

Table 2. Results of chemical analysis, sample S 1-2

Element	Content (wt%)
Na	0
Mg	0
Al	0
Si	0,10
Ca	5,31
Fe	0,08
P	3,30
S	6,12
K	0
N	0,19

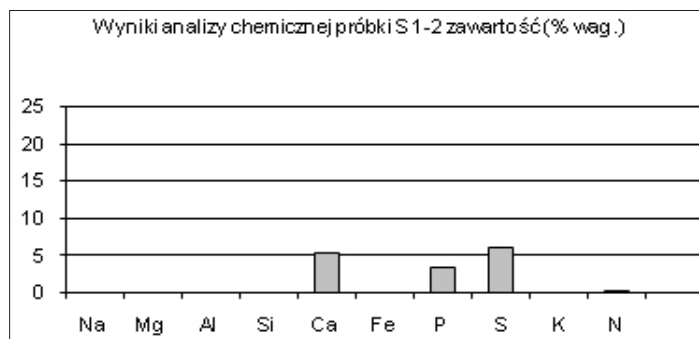


Fig 2. Graph of the content of elements in the examined tumor tissue area, slightly farther from the keratin pearl

Biomaterial Studies of Oral Squamous Cell Carcinoma

Sample S2, Squamous cell carcinoma
Man, age 65

The progressing changes in this case caused a gradual obliteration of cellular systems in keratin pearls with their gradual homogenization, as observed in histological preparations (Photo S2-1).

In the moderately matured forms, a larger diversity of cancer cells infiltrating the stroma with smaller

and more dispersed foci was also observed. They formed wedge shapes. The keratosis lesions were also smaller. The stratified arrangement of cancer cells has been eradicated. On the other hand, a greater variety of cell nuclei and more numerous mitotic divisions were observed. Furthermore, areas of cancer cells infiltrating the stroma under normal epithelium were found.

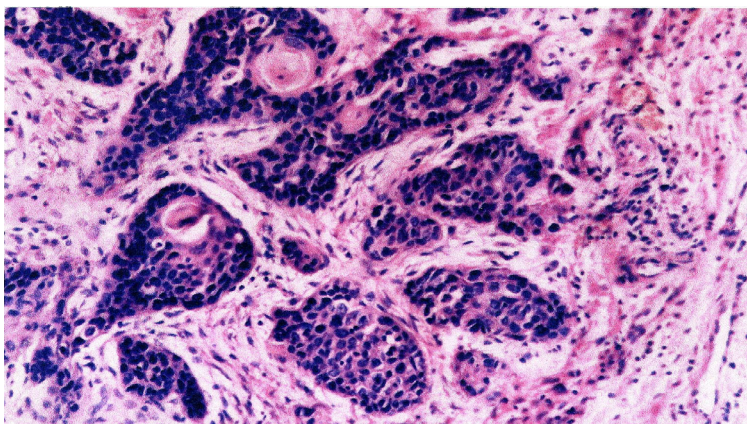


Photo S2-1. Squamous cell carcinoma, G2. Numerous small foci of cancer infiltrating the stroma. Biological microscope, stain H-E, magnification 220 x.

Tissue samples from the area shown in Photo S2-1 were examined using SEM with EDS analysis to determine their chemical composition (Photo 2-2,

Tab. 3, Fig. 3). It shows that in addition to phosphates, the tissue contains elevated levels of sodium and magnesium.

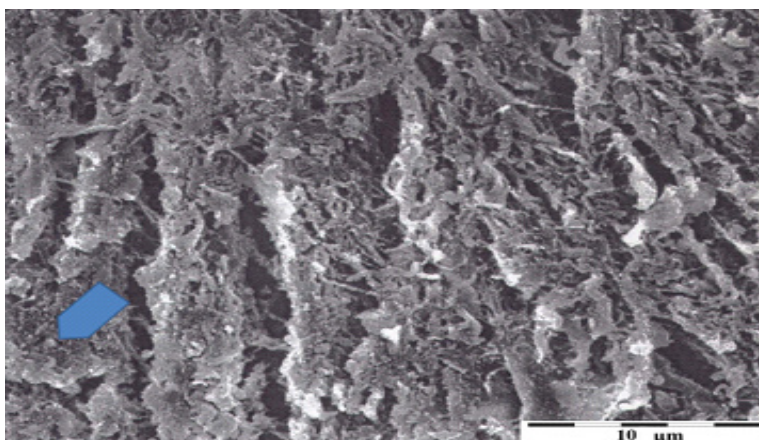


Photo S2-2. Cancer tissue structure in the area analyzed by EDS. Arrow marks the analyzed spot. SEM.

Table 3. Results of chemical analysis, sample S 2-1

Element	Content (wt%)
Na	0,38
Mg	0,09
Al	0
Si	0
Ca	1,13
Fe	0
P	0,67
S	0
K	0
N	0

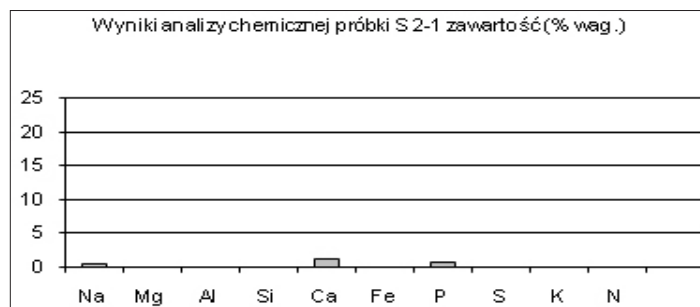


Fig 3. Graph of the content of elements in the examined tumor tissue area

Studies conducted in many other spots of cancer tissue show its structural diversity (Photo S2-3).

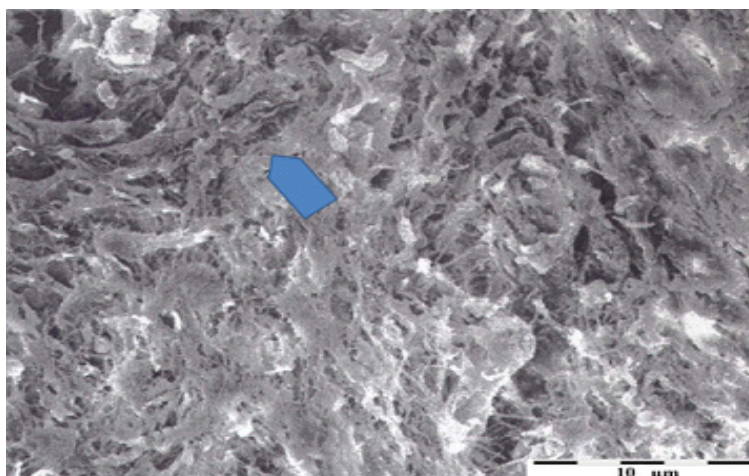


Photo S2-3. Photograph of diverse cancer tissue in the vicinity of infiltrating structures. SEM.

Chemical analyses (EDS) conducted in that area show presence of many elements in the tissues (Tab.4, Fig. 4).

Table 4. Results of chemical analysis, sample S 2-2

element	content (wt%)
Na	0,43
Mg	0,12
Al	0
Si	0,11
Ca	1,43
Fe	0,07
P	0,56
S	0,15
K	0
N	0

In this area there are elevated contents of more elements than in the area described above.

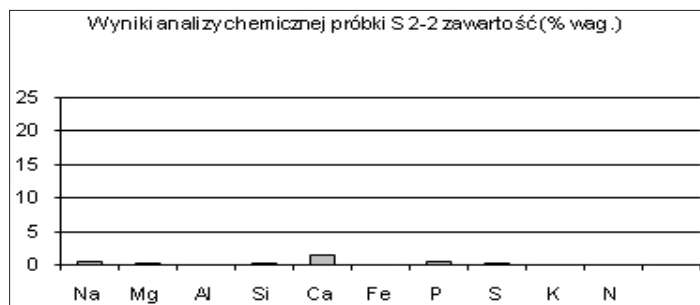


Fig. 4. Graph of the content of elements in the examined tumor tissue area

Biomaterial Studies of Oral Squamous Cell Carcinoma

Sample S3, Squamous cell carcinoma
Woman, age 69

Histological examinations revealed the presence of

slightly different structures in this sample, which allowed for the qualification of this case as squamous cell cancer, G3 (Photo S3-1).

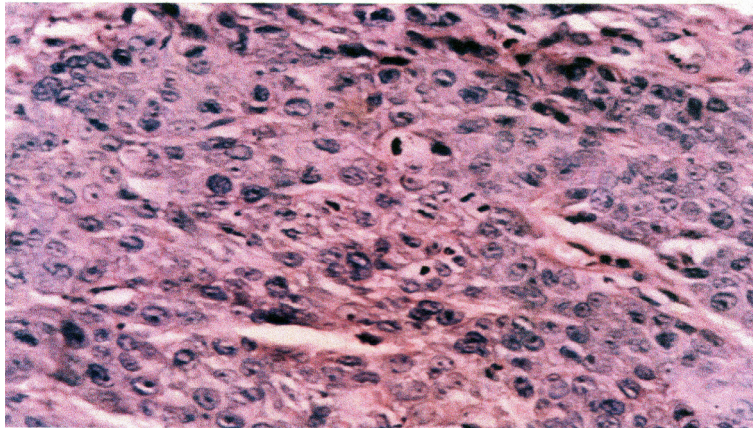


Photo S3-1. Squamous cell carcinoma, G3. Consistency of low-maturity squamous cell carcinoma with a characteristic cellular structure and numerous mitotic features. Biological microscope. Stain H-E, magnification 420x.

Observations of histological preparations showed that in low-maturity types of this cancer only single cells or groups of cells underwent keratinization. Sometimes it was difficult to notice them. However, a complete blurring of the structure of cancer focus with a chaotic cell structure was observed.

The cell nuclei showed significant heterogeneity with numerous nucleoli. There were also many shrunken (pyknotic) nuclei and a great many figures of the mitotic division. Sometimes cells with elongated, spindle-shaped nuclei resembling the consistency of sarcoma were also seen.

Analyzing the evaluated histopathological preparations under the biological microscope, no calcifications were found that would indicate visible mineralization of deposits, neither in the group of patients nor in the control group.

However, observations conducted under a scanning microscope at magnifications of about 500x revealed that the preparations contained numerous irregular “voids” left after cells (Photo S3-2). Spot EDX analyses indicate that tissue in areas close to tumor cells is chemically heterogeneous and locally enriched in calcium, nitrogen and sulfur (Tab. 5, Fig. 5).

EDS analyses from the entire surface of the preparation reveal that, on average, the amount of calcium and nitrogen in the slice slightly outweighs the amount of potassium. Numerous EDS spot analyses performed at 5000x magnification also reveal elevated calcium, sulfur and phosphorus contents. Analyses from the entire observed surface gave almost identical results. The chemical map of the surface of the slice at the magnification of 5000x reveals clear calcium precipitation in the vicinity of the cancer cells, which in most of the analyzed preparations formed granular, i.e. visible forms of concentrations.

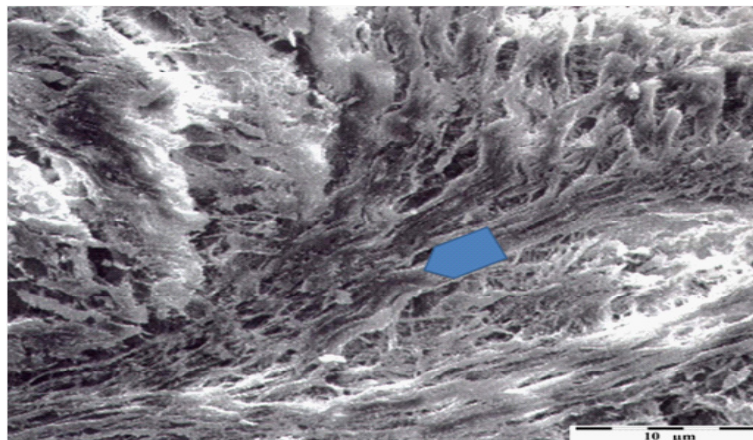


Photo S3-2. Image of diverse tissues in the area affected by squamous cell carcinoma, G3. SEM, magnification 300x.

Table 5. Results of chemical analysis, sample S 3-1

Element	Content (wt%)
Na	0
Mg	0
Al	0
Si	0
Ca	0,37
Fe	0
P	0
S	0
K	0,12
N	0,32

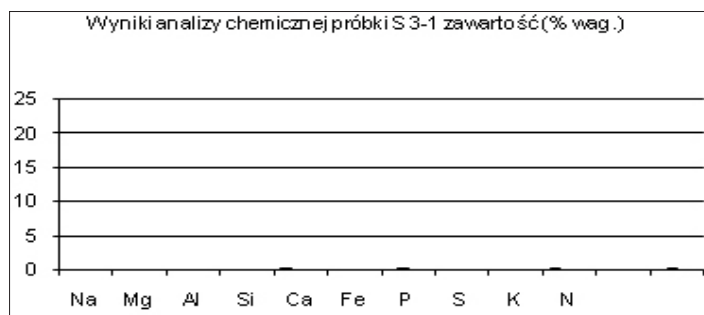


Fig 5. Graph of the content of elements in the examined tumor tissue area

Studies of other sites in the area of neoplastic changes show further differentiation of the chemical composition of tissues (Photo S3-3). This variability is observed even at points located only slightly apart from each other.

Calcium and phosphorus are found in the largest, although variable, amount (Tab. 6, Fig. 6). Nitrogen, potassium and silicon appear frequently. Magnesium and sulfur appear sometimes and in variable amounts.

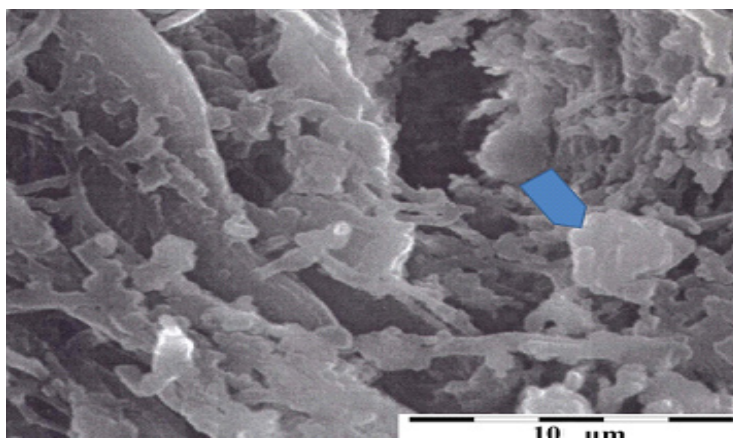


Photo S3-3. Cancer tissue structure seen under scanning microscope. Area analyzed with EDS. Arrows show points of spot analyses.

Table 6. Results of chemical analysis, sample S 3-2

Element	Content (wt%)
Na	0
Mg	0,39
Al	0
Si	0,12
Ca	0,73
Fe	0,10
P	0,39
S	0
K	0,11
N	0,49

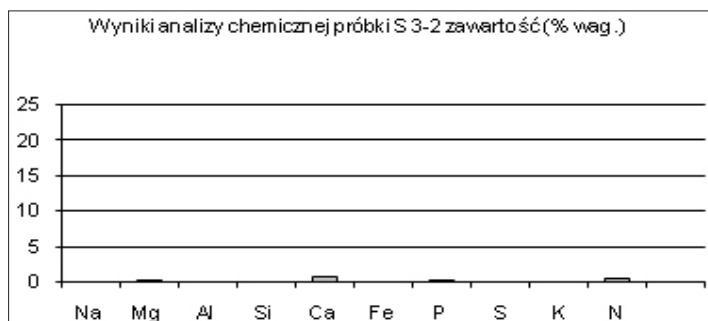


Fig 6. Graph of the content of elements in the examined tumor tissue area

Sample S4, Squamous cell carcinoma

Woman, age 58

This sample was mostly analyzed with biominerological

tests within the tumor area. The focus was on finding mineralization in pathological tissues where signs of mineralization were found under the scanning microscope (Photo S4-1).

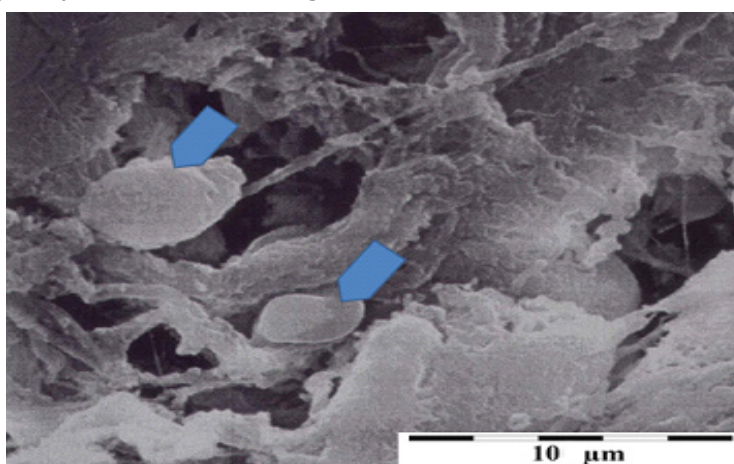


Photo S4-1. Image of the pathological squamous cell carcinoma tissue with two phosphatase grains (arrows). SEM.

Table 7. Results of chemical analysis, sample S 4-1

Element	Content (wt%)
Na	0,37
Mg	0
Al	0,21
Si	0,19
Ca	2,10
Fe	0
P	1,11
S	0,13
K	0
N	0

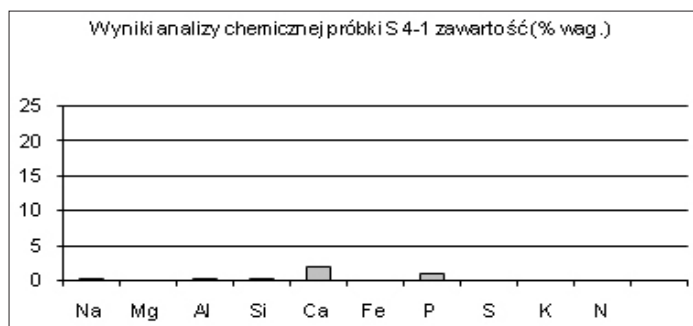


Fig 7. Graph of the content of elements in the examined tumor tissue area

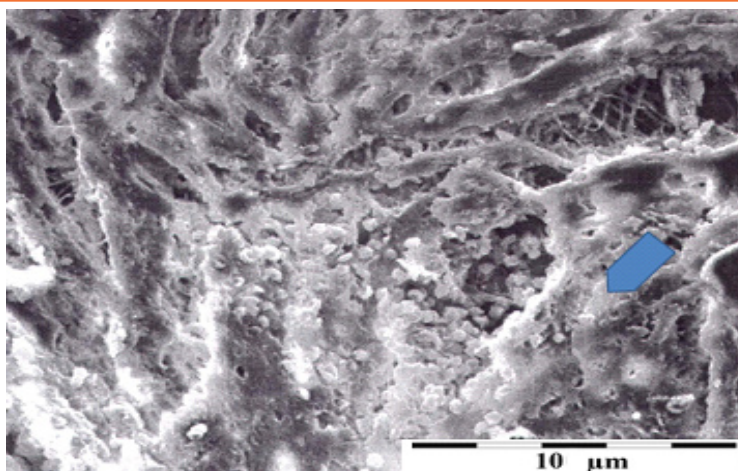


Photo S4-2. Cancer tissue affected by secret mineralization consisting of the substitution of elements into a biological structure (without visible mineral grains). The arrow shows the place of conducted chemical analysis (EDS). SEM.

Table 8. Results of chemical analysis, sample S4-2

Element	Content (wt%)
Na	0,27
Mg	0
Al	0,03
Si	0,31
Ca	3,39
Fe	0,11
P	0,97
S	0,12
K	0,08
N	0,27

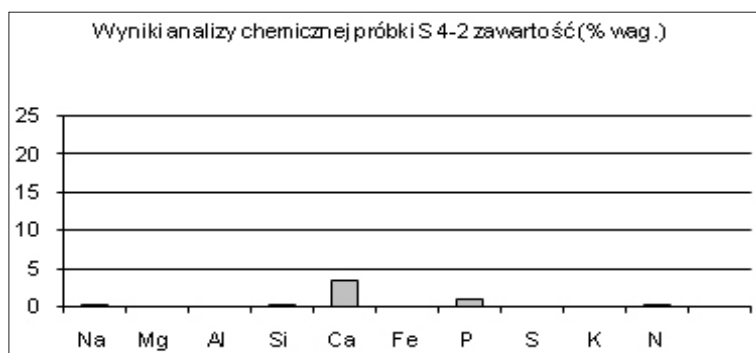


Fig 8. Graph of the content of elements in the examined tumor tissue area

Sample S5, Squamous cell carcinoma

Man, age 66

Microscopic observations (SEM) of tumor tissue showed its structural differentiation (Photo 5-1). Chemical analyses performed in many spots show variable, but mostly small amounts of elements such as Na, Si, Al, Ca, Fe, P, S, N and others. Interestingly, the elements differ from spot to spot. There are also

places where the chemical composition of tissues is similar (Tab. 9, Fig. 9).

This suggests complexity of pre-cancerous processes as well as chemical processes at the time of cancerous tissue development. Distinction between elements concentrating in the tissues before the development of cancer, and those that are the result of the cancer phenomena is impossible at this stage of the development of cancer processes.

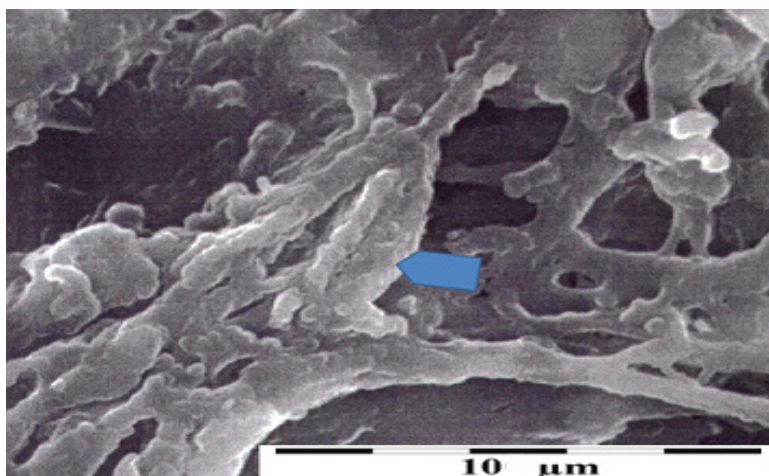


Photo S5-1. Fragment of tumor tissue affected by secret mineralization (arrow). SEM.

Table 9. Results of chemical analysis, sample S5-1

element	content (wt%)
Na	0,13
Mg	0
Al	0,11
Si	0,09
Ca	0,37
Fe	0,21
P	0
S	0,13
K	0
N	1,93

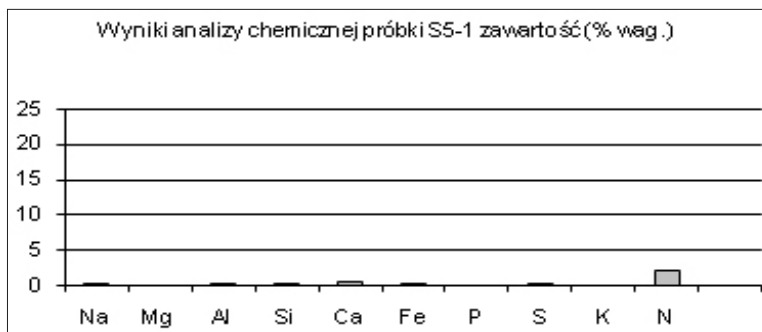


Fig 9. Graph of the content of elements in the examined tumor tissue area

RESULTS DISCUSSION

There are many methods to confirm the presence of cancer. Most often, it is diagnosed in clinical tests by conducting microscopic evaluation. The basic method is still collecting tissue sections from the boundary of healthy tissue - the place where the healthy tissue changes into the affected one - as well as from the place that is fully pathologically changed.

In the available literature there are not too many works dealing with the problem of the degree of mineralization of cancerous tumors, in particular in oral cancers. There are, however, reports about

pathological hypermineralization. Postolski et al. (54) discovered the presence of microcalcifications in the vicinity of cystic-type pathological lesions while examining women's breasts with sonomammography. There are also some rare reports describing the mineralogy of lung, skin, and other tumors (43, 48). Calcium and phosphorus, and even phosphate grains with apatite features have been found in many cancer tissues using mineralogical studies (45, 47, 48, 49).

Chemical analyses carried out with the EDS method have shown significant differences in the proportions between calcium and phosphorus as well as

magnesium and sodium in some areas affected by the cancer process. There were also noticeable differences in the distribution of these elements within the grains between individual patients.

It is known that tumor areas concentrate large amounts of cells undergoing constant divisions – a process that is promoted by rapid development of blood vessels. Research indicates that the chemical environment in which the cell division takes place may be important for the development of further errors in the neoplastic cellular DNA.

Difficulties in the discharge of metabolic products resulting from the rapid growth of cancer tissue cause acidification of the environment due to the increase in CO₂ level. However, when the pH of the “cancerous” environment in the tumor tissue returns to alkaline, phosphate crystallization may take place. This phenomenon was observed in several tumors, such as connective tissue sarcoma, bone tumors, thyroid cancer and others.

In presented research, it was discovered that mineralization of the area affected by cancer is initially secret and does not manifest as grains, but is only visible in chemical analyses as elevated contents of elements in tissue. It means that elements such as calcium, sulfur and phosphorus are built into tissue structures, which is why they cannot be discovered in studies using light microscopy. Secret mineralization can, but does not have to turn into visible mineralization. It may be visible as concentrations of micrograins – usually calcium phosphates.

An issue requiring further research is: which elements and in what quantities are accumulated in tissues in the precancerous phase, and which accumulate as a result of the activity of cancer tissues.

REFERENCES

- [1] Abdelsayed RA, Sumner T, Allen CM, Treadway A, Ness GM, Penza SL. 2002 Oral precancerous and malignant lesions associated with graft-versus-host disease: report of 2 cases. *Oral Surg Oral Med Oral Pathol Oral Radiol Endod.*, 93: 75-80.
- [2] Aldington S, Harwood M, Cox B, Weatherall M, Beckert L, Hansell A, et al. 2008 Cannabis use and cancer of the head and neck: case-control study. *Otolaryngol Head Neck Surg.*, 138: 374-380.
- [3] Angiero F, Berenzi A, Benetti A, Rossi E, Del Sordo R, Sidoni A, et al. 2008 Expression of p16, p53 and Ki-67 proteins in the progression of epithelial dysplasia of the oral cavity. *Anticancer Res.*, 28:2535-2539.
- [4] Awan KH, Morgan PR, Warnakulasuriya S. 2011 Utility of chemiluminescence (ViziLite) in the detection of oral potentially malignant disorders and benign keratoses. *J. Oral Pathol. Med.*, ; 0:541-544.
- [5] Bonicki W, Sobieraj A, Krajewski R, Michalik R, Maksymowicz W. 2001 Subfrontal transbasal approaches in treatment of benign neoplasms of the anterior and middle cranial fossa. *Proceedings of XII World Congress of Neurosurgery*. Red. G. Mc Culloch, P. Reilly, Monduzzi Editore, Sydney: 498-501.
- [6] Chen KM, Guttenplan JB, Zhang SM, Aliaga C, Cooper TK, Sun YW, et al. 2013 Mechanisms of oral carcinogenesis induced by dibenzo [a, l] pyrene: An environmental pollutant and a tobacco smoke constituent. *Int J Cancer*, 15, 133: 1300-1309.
- [7] Curtis RE, Metayer C, Rizzo JD, Socie G, Sobocinski KA, Flowers ME, et al. 2005 Impact of chronic GVHD therapy on the development of squamous-cell cancers after hematopoietic stem-cell transplantation: an international case-control study. *Blood.*, 105: 3802-3811.
- [8] Czerninski R, Zini A, Sgan-Cohen HD. 2010 Lip cancer: incidence, trends, histology and survival: 1970-2006. *Br J Dermatol.*, 162: 1103-1109
- [9] Epstein JB. 2007 Oral malignancies associated with HIV. *J Can Dent Assoc.*, 73: 953-956.
- [10] Epstein JB, Thariat J, Bensadoun RJ, Barasch A, Murphy BA, Kolnick L, et al. 2012 Oral complications of cancer and cancer therapy: from cancer treatment to survivorship. *CA Cancer J. Clin.*, 62: 400-422.
- [11] Ferlay J, Soerjomataram I, Dikshit R, Eser S, Mathers C, Rebelo M, et al. 2015 Cancer incidence and mortality worldwide: sources, methods and major patterns in GLOBOCAN 2012. *Int J. Cancer*, 136: E 359- 386.
- [12] Franceschi S, Talamini R, Barra S, Baron AE, Negri E, Bidoli E, et al. 1990 Smoking and drinking in relation to cancers of the oral cavity, pharynx, larynx, and esophagus in northern Italy. *Cancer Res.*, 50: 6502-6507.

- [13] Garavello W, Spreafico R, Gaini RM. 2007 Oral tongue cancer in young patients: a matched analysis. *Oral Oncol.*, 43: 894-897.
- [14] Gasche JA, Goel A. 2012 Epigenetic mechanisms in oral carcinogenesis. *Future Oncol.*, 8: 1407-1425.
- [15] Guha N, Boffetta P, Wunsch Filho V, Eluf Neto J, Shangina O, Zaridze D, et al. 2007 Oral health and risk of squamous cell carcinoma of the head and neck and esophagus: results of two multicentric case-control studies. *Am J Epidemiol.*, 166: 1159-1173.
- [16] Herrero R, Quint W, Hildesheim A, Gonzalez P, Struijk L, Katki HA, et al. 2013 Reduced prevalence of oral human papillomavirus (HPV) 4 years after bivalent HPV vaccination in a randomized clinical trial in Costa Rica. *PLoS One*, 8: 68329.
- [17] Holmes L, desVignes-Kendrick M, Slomka J, Mahabir S, Beeravolu S, Emani SR. 2009 Is dental care utilization associated with oral cavity cancer in a large sample of community-based United States residents? *Community Dent Oral Epidemiol.*, 37: 134-142.
- [18] Kawecki A, Starościk S, Towpik E, Jagielska B, Lenartowicz J, Pietras M, Szutkowski Z, Kiprian D. 2001 Results of the combined modality treatment in patients with primary unresectable oral cavity cancer. *Nowotwory*.
- [19] Kawecki A., Starościk S., Witwicki T., Towpik E., Krajewski R., Jarząbski A., Szutkowski Z., 2003 Ocena wpływu uzupełniającej radioterapii na gojenie i definitywną adaptację odległych unaczynionych płatów wykorzystywanych do natychmiastowej rekonstrukcji po resekcjach z powodu nowotworów głowy i szyi. *X Międzynarodowe Sympozjum „Onkologia w Otolaryngologii”*, Bydgoszcz,: 15-17.
- [20] Kraemer KH, Lee MM, Andrews AD, Lambert WC. 1994 The role of sunlight and DNA repair in melanoma and nonmelanoma skin cancer. The xeroderma pigmentosum paradigm. *Arch Dermatol.*, 130: 1018-1021.
- [21] Kuo MY, Jeng JH, Chiang CP, Hahn LJ. 1994 Mutations of Ki-ras oncogene codon 12 in betel quid chewing-related human oral squamous cell carcinoma in Taiwan. *J. Oral. Pathol. Med.*, 23:70-74.
- [22] Lubek JE, Clayman L. 2012 An update on squamous carcinoma of the oral cavity, oropharynx, and maxillary sinus. *Oral Maxillofac Surg. Clin. North. Am.*, 24: 307-316.
- [23] Lucenteforte E, Garavello W, Bosetti C, La Vecchia C. 2009 Dietary factors and oral and pharyngeal cancer risk. *Oral Oncol.*, 45: 461-467
- [24] Lumerman H, Freedman P, Kerpel S. 1995 Oral epithelial dysplasia and the development of invasive squamous cell carcinoma. *Oral Surg Oral Med Oral Pathol Oral Radiol. Endod.*, 79: 321-329.
- [25] Łaskawiec J., Pilch J., Grzybek H. 1992 Dotychczasowe osiągnięcia w adaptacji metod mikroskopii skaningowej i mikroanalizy rentgenowskiej dla potrzeb nauk medycznych. *Inż.Mater.*, 6: 139 - 142.
- [26] Maserejian NN, Joshipura KJ, Rosner BA, Giovannucci E, Zavras AI. 2006 Prospective study of alcohol consumption and risk of oral premalignant lesions in men. *Cancer Epidemiol Biomarkers Prev.*, 15: 774-781.
- [27] Masthan KM, Babu NA, Dash KC, Elumalai M. 2012 Advanced diagnostic aids in oral cancer. *Asian Pac J Cancer Prev.*, 13: 3573-3576.
- [28] Mehrotra R, Singh M, Thomas S, Nair P, Pandya S, Nigam NS, et al. 2010 A cross-sectional study evaluating chemiluminescence and autofluorescence in the detection of clinically innocuous precancerous and cancerous oral lesions. *J. Am. Dent. Assoc.*, 141: 151-156.
- [29] Mohd Bakri M, Mohd Hussaini H, Rahcel Holmes A, David Cannon R, Mary Rich A. 2010 Revisiting the association between candidal infection and carcinoma, particularly oral squamous cell carcinoma. *J. Oral Microbiol.*, 21; 2.
- [30] Moore SR, Johnson NW, Pierce AM, Wilson DF. 2000 The epidemiology of tongue cancer: a review of global incidence. *Oral Dis.*; 6: 75-84.
- [31] Montebugnoli L, Gissi DB, Marchetti C, Foschini MP. 2011 Multiple squamous cell carcinomas of the oral cavity in a young patient with graft-versus-host disease following allogeneic bone marrow transplantation. *Int J Oral Maxillofac Surg.*, 40: 556-558.

- [32] Moore SR, Johnson NW, Pierce AM, Wilson DF. 2000 The epidemiology of mouth cancer: a review of global incidence. *Oral Di.*, ;6: :65-74.
- [33] Neville BW, Day TA. 2002 Oral cancer and precancerous lesions. *CA Cancer J Clin*; 52: 195-215.
- [34] Noguchi K, Nakase M, Inui M, Nakamura S, Okumura K, Tagawa T. 2010 A case of tongue carcinoma associated with chronic graft-versus-host disease after allogeneic haematopoietic stem cell transplantation. *Aust. Dent. J.*, 55:200-202.
- [35] Patel SG, Shah J. 2005 TNM staging of cancers of the head and neck: *Cancer Cell & Microenvironment* 2016; 3: e1332. doi: 10.14800/ccm.1332; © 2016 by Giacomo Del Corso, et al. <http://www.smartcitech.com/index.php/ccm> Page 11 of 11 striving for uniformity among diversity. *CA Cancer J. Clin.*, 55:242-258.
- [36] Patton LL, Epstein JB, Kerr AR. 2008 Adjunctive techniques for oral cancer examination and lesion diagnosis: a systematic review of the literature. *J Am Dent Assoc.*, 139: 896-905.
- [37] Pawlikowski M., 1987 Mineralizacja organizmu człowieka żyjącego. (Mineralization of human living organism). *Prace Mineral.*, 79: 121.
- [38] Pawlikowski M., 1991c Mineralizacja nowotworowa (Cancer mineralization). W: *Biomaterializacja i biomateriały*. PWN, Warszawa: 84-92.
- [39] Pawlikowski M., 1993a Krysztaly w organizmie człowieka. (Crystals of human organism). *Secesja. (Atlas)*:132.
- [40] Pawlikowski M., 1995a Sekrety mineralizacji tkanek (Secret of tissue mineralization). PAN, Kraków :97.
- [41] Pawlikowski M., Niedźwiedzki T., 2002 Mineralogia kości. (Mineralogy of bones). Wyd. PAN Oddział w Krakowie: 128.
- [42] Pawlikowski M., 2011 Biomaterialization of cancer tissues. 20th Int. Symp. Molecular and Physiological Aspects of Regulatory Processes of the Organism. Cracow. Ed. H. Lach. Wyd. Abaton. Kraków : 190-191.
- [43] Pawlikowski M., 2014 Osteoporosis as a source of tissue mineralization. Research on osteoporosis therapy and dissolution of arterial mineralization. *Jour Life Science* 8: 610-625.
- [44] Pawlikowski M., 2017a Biomaterialogy of angiogenesis. *Arch. Clin. Biomed. Res.*, 1 (4): 161-167.
- [45] Pawlikowski M., Miler M., 2017b Biomaterialogy of selected skin cancer. *SM Dermatolog J.*, 3(3): 101.
- [46] Pawlikowski M., 2017c Centers of Human Tissue Biomaterialization (Calcification). *Cardiol Cardiovasc Med.*, 1 (6): 252-261.
- [47] Pietras M., Starościk S., Krajewski R., Jackiewicz P., Gałczyński J., Lenartowicz J., Mitrega-Korab B., 2004 Doświadczenia zespołu Kliniki Nowotworów Głowy i Szyi w leczeniu chirurgicznym nowotworów masywuszcękowo-sitowego. I Krajowe Forum Rynologiczne. Warszawa, 04-05.
- [48] Pilch J., Łaskawiec J., Grzybek H. 1994 Mikroanalityczne i ultrastrukturalne badania w diagnostyce stanów przed nowotworowych raka krtani. *Inż. Mater.*, , 6, 83: 174 - 177.
- [49] Pitman KT, Johnson JT, Wagner RL, Myers EN. 2000 Cancer of the tongue in patients less than forty. *Head Neck*, 22: 297-302.
- [50] Popovtzer A, Shiptzer T, Bahar G, Marshak G, Ulanovski D, Feinmesser R. 2004 Squamous cell carcinoma of the oral tongue in young patients. *Laryngoscope*, 114: 915-917.
- [51] Postolski M., Rogala J., Zajkowski P., Wysocki M., Jakubowski W.: 1996 Mikro- zwapnienia w badaniu sonomammograficznym - doniesienie wstępne. *Ultras.Pol.*, 6, 2: 70 - 75.
- [52] Radoi L, Paget-Bailly S, Guida F, Cyr D, Menvielle G, Schmaus A, et al. 2013 Family history of cancer, personal history of medical conditions and risk of oral cavity cancer in France: the ICARE study. *BMC Cancer*, 13: 560.
- [53] Radoi L, Paget-Bailly S, Menvielle G, Cyr D, Schmaus A, Carton M, et al. 2013a Tea and coffee consumption and risk of oral cavity cancer: Results of a large population-based case-control study, the ICARE study. *Cancer Epidemiol.*, 37: 284-289.

Biominerological Studies of Oral Squamous Cell Carcinoma

- [54] Ram S, Siar CH. 2005 Chemiluminescence as a diagnostic aid in the detection of oral cancer and potentially malignant epithelial lesions. *Int. J. Oral. Maxillofac Surg.*, 34: 521-527.
- [55] Rautava J, Syrjanen S. 2011 Human papillomavirus infections in the oral mucosa. *J Am Dent Assoc.*, 142: 905-914.
- [56] Salum FG, Martins GB, de Figueiredo MA, Cherubini K, Yurgel LS, Torres-Pereira C. 2006 Squamous cell carcinoma of the tongue after bone marrow transplantation in a patient with Fanconi anemia. *Braz. Dent J.*, 17: 161-165.
- [57] Schnetler JF. 1992 Oral cancer diagnosis and delays in referral. *Br. J. Oral Maxillofac Surg.*, 30: 210-213.
- [58] Sciubba JJ. 1999 Improving detection of precancerous and cancerous oral lesions. Computer-assisted analysis of the oral brush biopsy. U.S. Collaborative OralCDx Study Group. *J. Am. Dent. Assoc.*; 130:1445-1457
- [59] Scully C, Moles D. Oral cancer. Hegggenhougen KH, Quah S, eds 2008 *Encyclopedia of public health*. Vol 4. San Diego, CA: Academic Press : 668-677.
- [60] Shiboski CH, Shiboski SC, Silverman S Jr. 2000 Trends in oral cancer rates in the United States, 1973-1996. *Community Dent Oral Epidemiol.*, 28: 249-256.
- [61] Silverman S. 2001 Demographics and occurrence of oral and pharyngeal cancers. The outcomes, the trends, the challenge. *J Am Dent Assoc.*, 132 Suppl: 7S-11S.
- [62] Singh R, Haridas N, Shah F, Patel JB, Shukla SN, Patel PS. 2013 Gene polymorphisms, tobacco exposure and oral cancer susceptibility: a study from Gujarat, West India. *Oral Dis.*, 20: 84-93.
- [63] Tettamanti L, Caprioglio A, Tecco S, Barello G, Macchi A, Tagliabue A, et al. 2012 Oral Squamous Cell Carcinoma in the paediatric patient: a literature review. *Eur J Paediatr. Dent.*, 13: 35-40
- [64] Vargas-Ferreira F, Nedel F, Etges A, Gomes AP, Furuse C, Tarquinio SB. 2012 Etiologic factors associated with oral squamous cell carcinoma in non-smokers and non-alcoholic drinkers: a brief approach. *Braz Dent. J.*, 23: 586-590.
- [65] Van der Waal I. 2010 Potentially malignant disorders of the oral and oropharyngeal mucosa; present concepts of management. *Oral Oncol*; 46: 423-425.
- [66] Veness MJ, Morgan GJ, Sathiyaseelan Y, Gebiski V. 2003 Anterior tongue cancer: age is not a predictor of outcome and should not alter treatment. *ANZ J Surg.*, 73: 899-904.
- [67] Warnakulasuriya S, Johnson NW, van der Waal I. 2007 Nomenclature and classification of potentially malignant disorders of the oral mucosa. *J. Oral. Pathol. Med.*, 36: 575-580.
- [68] Zubairy YF, Patil VW, Benjamin T, Jangam D, Bijle MN, Patil S. 2012 Effect of methylxanthines (coffee/tea consumers) on oral precancer and oral cancer patients with smoking and smokeless tobacco habits. *J Contemp Dent Pract.*, ;13: 745-758.
- [69] *Cancer Cell & Microenvironment* 2016; 3: e1332. doi: 10.14800/ccm.1332; © 2016 by Giacomo Del Corso, et al. <http://www.smartsitech.com/index.php/ccm> Page 8 of 11
- [70] *Cancer Cell & Microenvironment* 2016; 3: e1332. doi: 10.14800/ccm.1332; © 2016 by Giacomo Del Corso, et al. <http://www.smartsitech.com/index.php/ccm> Page 10 of 11

Citation: Maciej Pawlikowski. *Biominerological Studies of Oral Squamous Cell Carcinoma*. *Archives of Community and Family Medicine*. 2019; 2(1): 19-33.

Copyright: © 2019 Maciej Pawlikowski. This is an open access article distributed under the Creative Commons Attribution License, which permits unrestricted use, distribution, and reproduction in any medium, provided the original work is properly cited.